

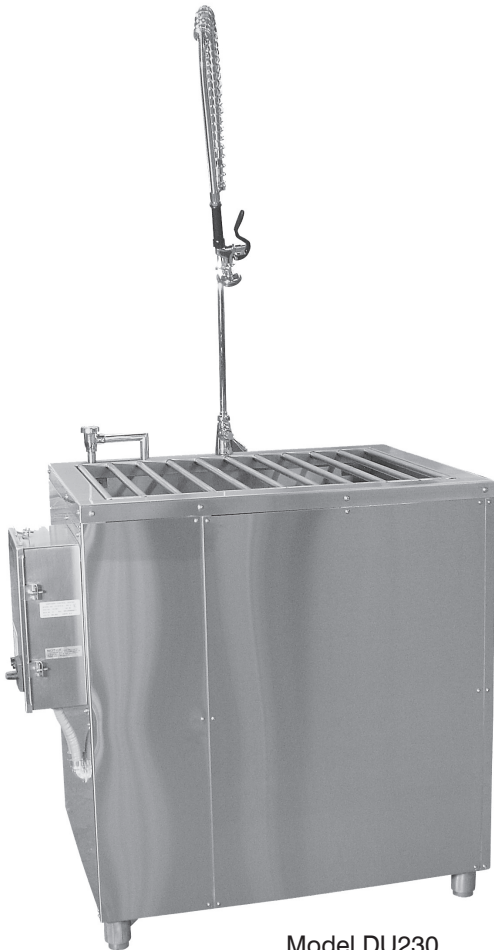


# BEDDING DISPOSER

## PRODUCT DESCRIPTION

The **SMC Model DU230** Series is used to dispose of used bedding waste from laboratory animal cages.

It is a stand-alone unit, capable of grinding used bedding and other matter normally found in animal caging, mixing the material with cold water and flushing the resulting slurry into the sanitary sewer.



Model DU230

## STANDARD FEATURES:

- Durable stainless steel construction
- Heavy-duty safety grating work surface
- Insinkerator® disposal units
- Post-purge timer and water-saver circuitry
- Hand spray unit with spring-loaded wand for pre rinse and clean up
- Back and side splash guards

## CONSTRUCTION:

- All stainless steel construction
- Heavy-duty stainless steel removable grating over the sink
- Control panel contains all motor starters, transformers, relays and components, including disconnect and ON/OFF switches.

## OPTIONAL FEATURES:

### Dust Collector

- Up or downdraft dust collection with optional HEPA filter
- High-velocity up or downdraft duct/dust collector
- Wired with the ON/OFF switch mounted on the operator control panel

### Fused Disconnect Switch

- A NEMA 4X fuseable disconnect switch mounted alongside electrical enclosure

### Hopper Integration

- Integrated with the in-feeding end of a tunnel washer
- All controls integrated with the tunnel washer controls



**Free Lifetime Tech Support...  
No Service Contract Required.**

\*The LEED® (Leadership in Energy and Environmental Design) Green Building Rating System is the nationally accepted benchmark for the design, construction, and operation at high performance green buildings.\*

DU230

www.schlyermachine.com

<b>MODEL</b>	<b>GRINDER SIZE</b>	<b>CAPACITY/HR</b>	<b>EXTERNAL OVERALL SIZE</b>	<b>MATCHES TUNNEL WASHER WIDTH</b>
<b>DU235</b>	5 hp 3.7 kw	1400 lbs./ 9 ft <sup>3</sup> 636 kg / 0.255 m <sup>3</sup>	36" x 28" x 42" 91 x 71 x 107 cm	24" / 61 cm or 30" / 76 cm belt
<b>DU237</b>	7.5 hp 5.5 kw	1800 lbs./ 12 ft <sup>3</sup> 818 kg / 0.340 m <sup>3</sup>	36" x 28" x 42" 91 x 71 x 107 cm	36" / 91 cm belt
<b>DU231</b>	10 hp 7.4 kw	2200 lbs./ 15 ft <sup>3</sup> 1000 kg / 0.425 m <sup>3</sup>	36" x 28" x 42" 91 x 71 x 107 cm	48" / 122 cm belt
<b>DU23 (X)-HI</b>	5 / 7/ 10.5 hp	as above	various	any size

**NOTE: DU23 (X) - HI** unit shall be hopper-integrated to a new tunnel washer.

The (X) shall be replaced with the appropriate numeral (5, 7 or 1) to complete the model number.

<b>UTILITY REQUIREMENTS</b>	<b>DU235</b>	<b>DU237</b>	<b>DU231</b>
<b>Electrical - Dispenser Only</b> 208 / 230 / 480 Volt 60 Hz / 3 Ph / 4 Wire	5 hp 3.7 kw	7.5 hp 5.5 kw	10 hp 7.4 kw
<b>Electrical - With Dust Collector</b> 208 / 230 / 480 Volt 60 Hz / 3 Ph / 4 Wire	6 hp 4.4 kw	8.5 hp 6.3 kw	11 hp 8.1 kw
<b>Cold Water</b>	7 - 8 GPM 27 - 30 LPM	7 - 8 GPM 27 - 30 LPM	7 - 8 GPM 27 - 30 LPM
<b>Drain</b>	3" / 8 cm	3" / 8 cm	3" / 8 cm
<b>Operational Weight</b>	500 lbs. / 227 kg	700 lbs. / 318 kg	800 lbs. / 363 kg
<b>Shipping Weight</b>	650 lbs. / 295 kg	850 lbs. / 386 kg	1050 lbs. / 477 kg